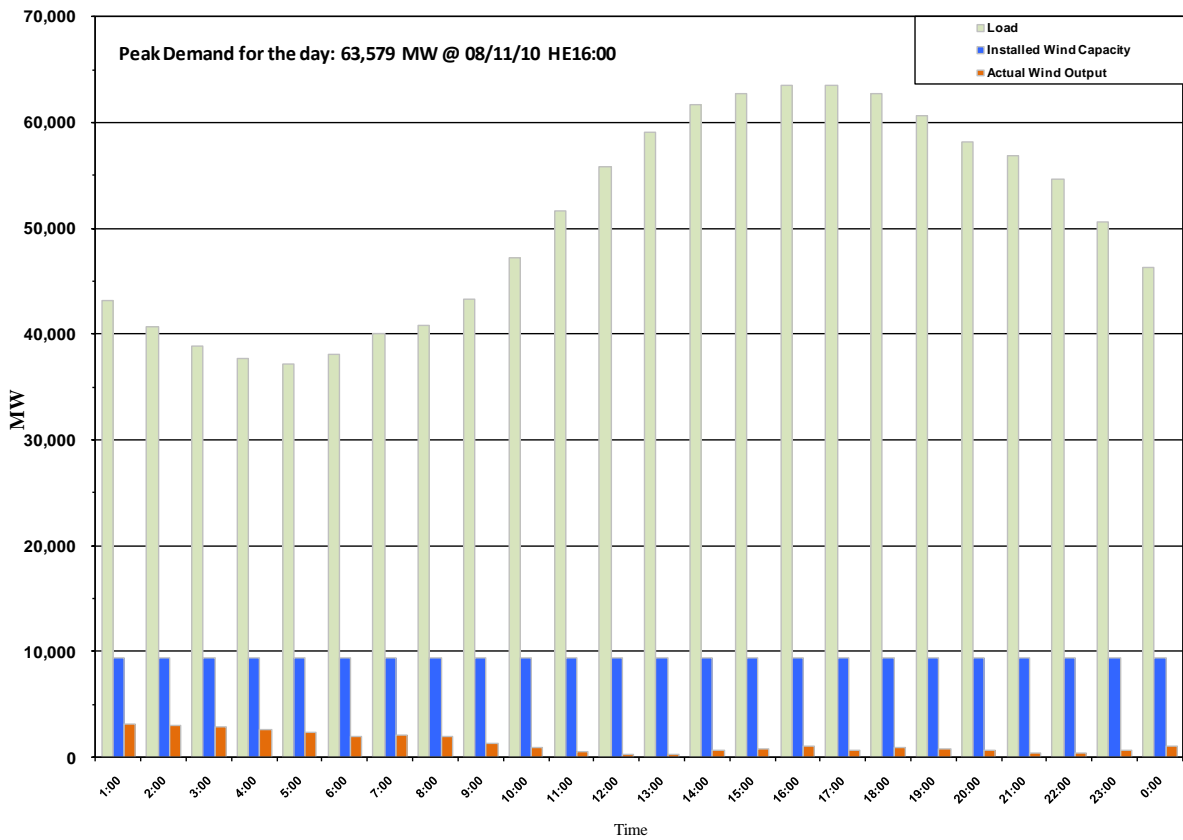




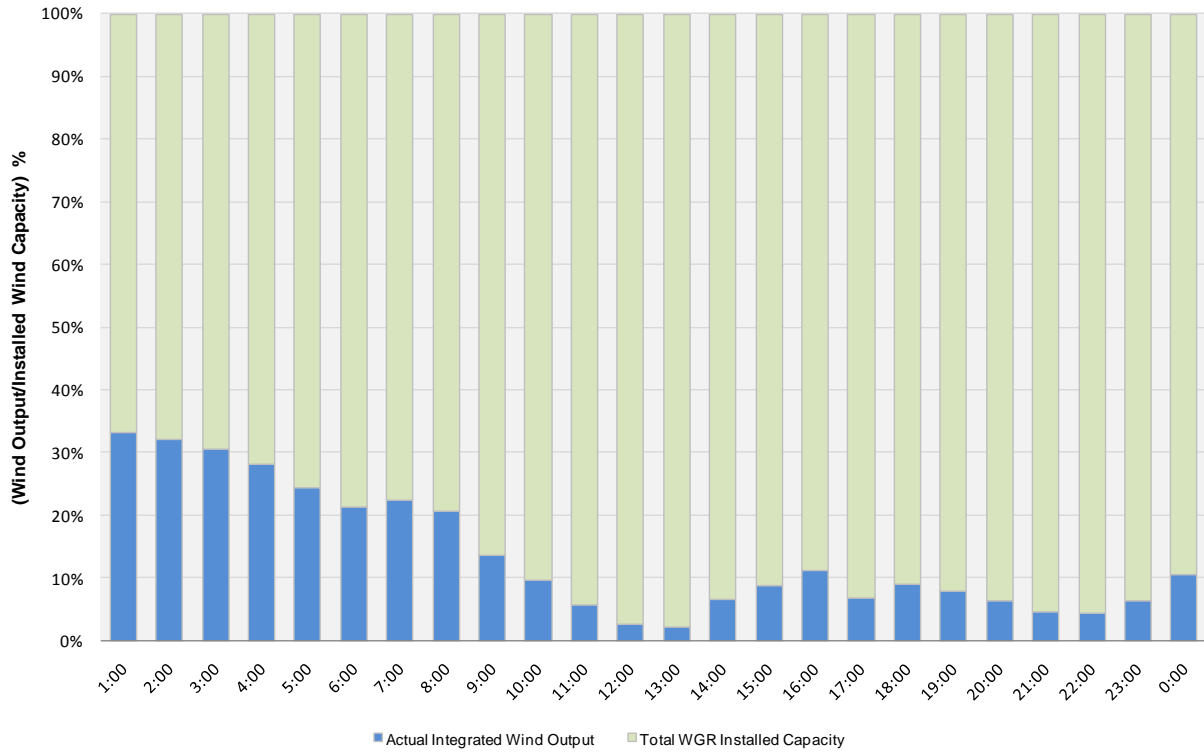
## ERCOT Grid Operations Wind Penetration Report: 08/11/10

Peak Load **63,579 MW**  
Load Peak Hour **16**  
Wind Record 06/12/10 **7016 MW**  
Max Wind value **3345 MW**  
Wind Peak Hour **00:00:44**  
Wind Penetration % **7.47**

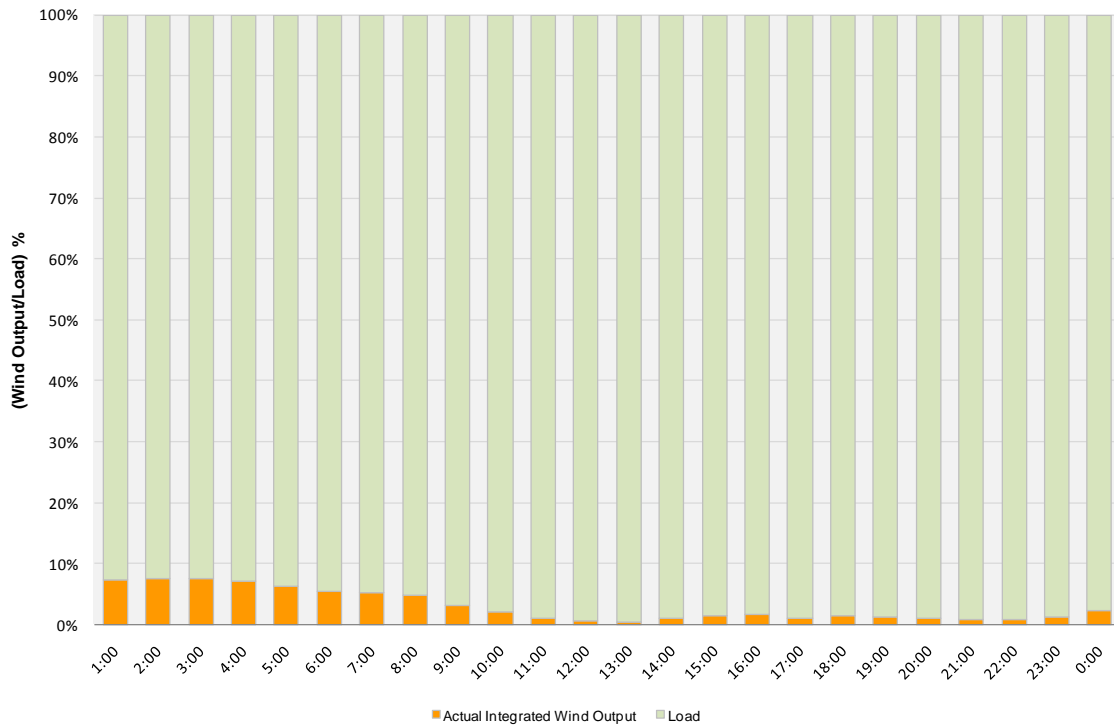




### Actual Wind Output as a Percentage of the Total Installed Wind Capacity 08/11/2010



### Actual Wind Output as a Percentage of the ERCOT Load 08/11/2010





ERCOT Load vs. Actual Wind Output 08/04/10 - 08/11/10

